



5 DAY KRUGER & PANORAMA BUDGET SAFARI

The Kruger National Park is one of the world's leading nature reserves and on a 5-day safari we spend quality time on safari making the most of your time in Kruger.



ABOUT THE TOUR



WHAT TO EXPECT

This 5-day safari offers an unforgettable blend of wildlife exploration and scenic beauty. Starting with a transfer from Johannesburg to Hazyview, guests settle into the lodge and enjoy a light lunch before a sunset/night safari in the Kruger National Park. Each morning begins before sunrise, with thrilling safaris exploring the park's expansive 2,000,000 hectares, maximizing opportunities to see the Big 5. Meals include breakfast packs in the park, light lunches, and dinners at the lodge, with time to relax and enjoy the lodge's amenities.

A full day is dedicated to the Panorama Tour, featuring highlights like God's Window, Bourke's Luck Potholes, the Blyde River Canyon, and Lisbon Waterfalls. On the fourth day, guests enjoy a morning safari followed

by an afternoon of leisure at the lodge. The experience concludes with a final morning safari before returning to Johannesburg. This comprehensive itinerary combines adventure, relaxation, and the chance to fully immerse in the wonders of the Kruger and its surrounding landscapes.

DEPARTURE & RETURN LOCATION

Clients will be collected and returned from lodges within a 5 km radius of the OR Tambo International Airport at 7 am and will return on the last day between 17:00 – 18:00 Pm.

Clients can fly directly into Skukuza Kruger National park, or Kruger Mpumalanga International Airports and be collected by your Kurt Safari Guide at no additional cost.



KEEP IT SIMPLE,
KEEP IT WILD.



Price Includes

- Licensed and Professional Safari Guides
- 1 Sunset Safari / Night safari
- 1 Full-day open vehicle safaris in the Kruger National Park.
- 1 Full day Panorama Tour
- 2 Half-day open vehicle morning safari in the Kruger National Park.
- Transfers to & from Johannesburg O.R. Tambo Airport.
- 4 Nights' 3 Star Accommodation in Hazyview
- 4 Breakfasts & 4 Dinners – as per itinerary.
- 5 Days' Conservation levies & entry fees.
- 2 Lunch's
- Mineral waters on all drives

Price Excludes

- All Meals & Beverages not specified in Itinerary
- Items of personal nature
- Gratuities.

What to Bring

- Comfortable shoes
- Warm & Rainproof Jackets
- Sunhat
- Sun Cream
- Cameras
- Personal belongings

We prefer the lodges and hotels outside of the Kruger Park as there is a bigger variety of accommodation, and it is only 10-15 minute drive to the nearest entry gate. All the accommodation venues are privately owned.

Important Note

Clients flying out of OR Tambo on the last day to please not book flights earlier than 20:00 pm for domestic flights and 21:00 pm for international flights as one cannot always guarantee on-time arrival at OR Tambo International Airport.



5 DAY KRUGER & PANORAMA BUDGET SAFARI

Day 1: Transfer from Johannesburg & Sunset/Night safari (Lunch & Dinner Included)

Guests will be collected from the various lodges and hotels within a 5 km radius of the OR Tambo International Airport between 6:30 am and 6:45 am, and then from the OR Tambo International Airport shuttle and bus Terminal between 6:45 and 7:00 am. We depart for Hazyview at 7:15 am.

Clients have the option of flying directly into Skukuza Airport, or to Kruger Mpumalanga International Airport, and be collected by a Kurt Safari guide at no additional cost.

Please confirm your pickup details the day before the tour by sending an email to online@kurtsafari.com. Please note these are shared departures.

We will travel straight to the lodge in Hazyview and we arrive between 11:30 am and 12:00 pm. Guests will have time to relax, unpack and settle into their rooms before enjoying a light lunch. There is also time to go for a swim or a walk around the beautiful lodge and its walking trails. We depart at around 16:00 pm for our Sunset/Night Safari in the Kruger National Park before returning to the lodge at approximately 19:30 or 20:00 pm for a scrumptious dinner, and a good night's rest.

Day 2: Full Day Open Vehicle Safari in the Kruger National Park (Breakfast & Dinner included. Lunch on your own account)

All of our safaris start before the sun rises, as the early morning hours are the absolute best time of day for spotting wildlife, especially predators. The guide will choose the best areas of the park to explore on this Kruger Park game drive. During this morning's game drive, we will keep a lookout for all sorts of animals, including the Big 5.

The lodge will arrange breakfast packs and after about 3 hours of driving, your guide will stop for breakfast and bathroom break, and there is also a chance to get a coffee. We then continue with the safari. The Kruger Park is home to a variety of eco zones and each one has a different kind of wildlife to see. During the safari, we will visit rivers and watering holes as well as the vast open plains and the park's Bushveld regions.

We then stop for lunch at a rest camp, where this meal will be on your own account. While here there will be time to do some curio shopping or to indulge in a cold beer! The guide will then continue with the safari, as you make your way back towards the lodge. We arrive back at between 15:30 and 16:00 pm, with enough time to relax, swim and have a great dinner.

Day 3: Full Day Panorama Tour (Breakfast & Dinner Included. Lunch on your own account)

The Panorama Route tour offers a full day of exploring some of South Africa's most iconic destinations.

Starting with a hot breakfast at the lodge, guests embark in a comfortable, air-conditioned vehicle, ascending into the breathtaking Northern Drakensberg Mountain Range. Stops include God's Window, offering spectacular views and a short rainforest walk; Bourke's Luck Potholes, a unique rock formation created by water erosion; the Blyde River Canyon, the world's 3rd largest canyon; and the 3 Rondavels, striking rock formations resembling traditional African huts.

Guests also visit the beautiful Lisbon Waterfalls before heading to the town of Graskop for lunch at a famous pancake restaurant and curio shopping. The tour concludes with a return to the lodge by 4:00 pm, leaving time to relax, swim, and enjoy dinner.

DAY 4: Morning Safari and Afternoon of Leisure (Breakfast, Lunch, and Dinner Included)

We again depart before the sun is up for our morning safaris. The early, cool morning hours are the best time of day for viewing wildlife including predators like lions and hyenas, who are mostly active during the early hours of the day. Your guide will today try to find animals and exploring regions not yet seen or covered during the previous safari. The Kruger National Park is home to 148 mammal species and over 500 bird species. No safari is ever the same and there is always something new and interesting to see.

The Kruger has a huge network of roads to explore and our guides, who know the park so well, will drive in different areas of the park during the different seasons, giving our clients the maximum opportunity to see more of the beautiful wilderness, wildlife and vegetation.

We will return to the lodge at around 11 am and today we are relaxing and enjoying an afternoon of leisure. You can swim, stretch your legs with a walk around the lodge, try our local beers or just enjoy our great African weather. Breakfast, a light lunch and dinner, are included.

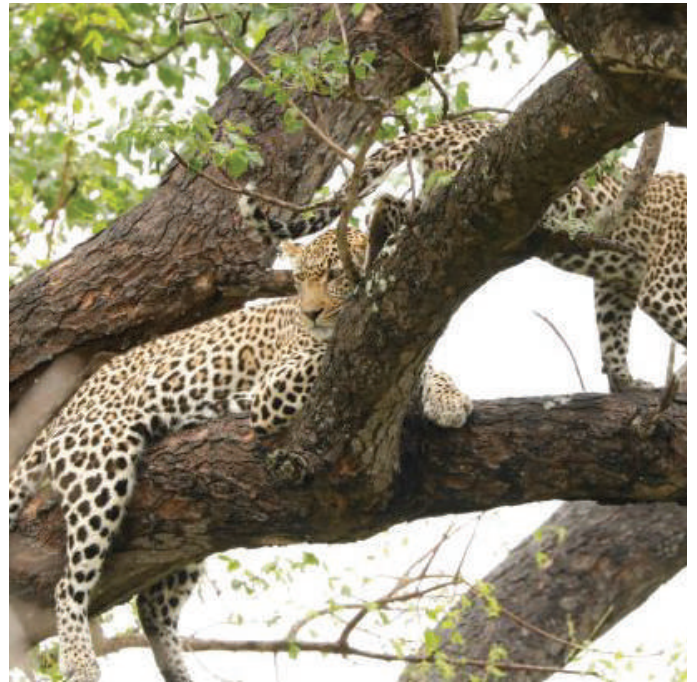


DAY 5: Morning Safari and Transfer back to Johannesburg (Breakfast Included)

Today is our last safari and again we depart from the lodge before sunrise. We will have another packed breakfast at one of the rest camps or picnic sites. The guide will focus on trying to find the animals we couldn't find on the first 2 safaris, and as always we hope to see lion and leopard as they are at their most active in the early mornings.

After a short breakfast and coffee stop, we will continue with the safari, as we make our way back to the lodge at around 12:00 pm.

After saying goodbye to your guide and freshening up, the journey back to Johannesburg begins. Clients are collected by the shuttle at around 12:30 pm, and you will return to Johannesburg's OR Tambo shuttle terminal or a lodge within a 5 km radius of the airport, arriving between 17:00 pm and 18:00 pm



TOUR INFO

PREFERRED LODGES AROUND OR TAMBO INTERNATIONAL AIRPORT



CITY LODGE
OR Tambo Airport
011 558 7600
Walking Distance



PROTEA HOTEL
OR Tambo Airport
011 977 2600
3Km Max - Uber/Taxi



GARDEN COURT
OR Tambo Airport
011 974 5202
3Km Max - Uber/Taxi

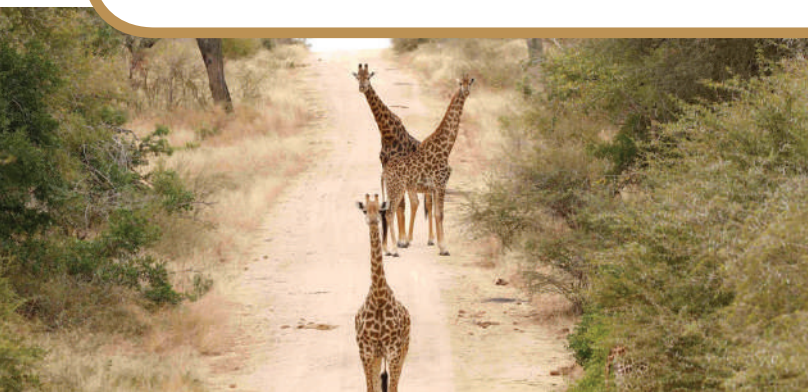
OR TAMBO INTERNATIONAL AIRPORT MAP





TERMS & CONDITIONS

1. A small single supplement is charged for single travellers.
2. All rates are quoted in South African Rand.
3. All prices are quoted in Rack rates.
4. Transfer costs and Conservation fees are included in the rates.
5. Rates are subject to change due to 3rd Party suppliers.
6. Safaris and Transfers are not private unless booked on a private basis.
7. Children 11 & under sharing with 2 adults = 75% of adult rate for private tours & 50% for shared, unless otherwise indicated.
8. Children under the age of 8 need to be booked under private departures (min 4 clients).
9. If children are 3 years or younger, all safaris will be conducted in closed air-conditioned vehicles.
10. Guests that are making use of our shuttle and flying out of O.R. Tambo International Airport on the last day are reminded not to book any flights departing earlier than 19:00 (domestic) or 20h00pm (international).
11. We do not accept any liability for guests missing flights, should they be booked to fly out on the last day.
12. Please note that we have a luggage restriction of 20Kg per person and a small piece of hand luggage.
13. Please note shuttles from Johannesburg depart at 6:45 am from the OR Tambo Bus & Shuttle Terminal and a maximum 5 km radius from the OR Tambo International Airport.
14. Please request our list of accommodation venues available in the area; all lodges include a shuttle service to and from the OR Tambo International Shuttle/Bus terminal; it is very safe and clearly marked.
15. Clients can also access the OR Tambo shuttle bus terminal from Sandton Hotels/Pretoria via the Gautrain service or Uber.
16. Clients will be collected from various accommodation venues between 06h00-06h45am; these times will be confirmed with you via your consultant when booking the tour.





I AM PREPARED
TO GO ANYWHERE
**AS LONG AS IT IS
FORWARD.**

- Dr David Livingstone

Get in touch

We would love to hear from you and work towards meeting all your safari requirements.



68 Korhaan Street, Hazyview
South Africa 1242

Tel: +27 (0) 63 718 5590
E-mail: online@kurtsafari.com



WWW.KURTSAFARI.COM